



# YOUR PARTNER IN THE CONSTRUCTION INDUSTRY



**BLUE**  
**WORKX**

[www.blue-workx.nl](http://www.blue-workx.nl)

**BLUE**  
**WORKX**

---



## BLUE WORKX TRANSPORT SOLUTIONS ARE SUSTAINABLE, HIGH QUALITY, SAFE AND DURABLE

### SAVING ON TRANSPORT COSTS

Efficient transport is a key factor for saving costs in the construction industry. How can heavy concrete walls be transported in an efficient way? Blue Workx has developed special transport solutions for transport of large, heavy products that enable considerable savings on your logistic costs. The use of inside loaders with inside loader pallets means that you no longer need a crane to unload prefab concrete walls. In addition, the walls can be transported in the upright position. This allows the use of the maximum load capacity of a truck, which helps keep the transport costs down.

### CHARACTERISTICS OF INSIDE LOADERS

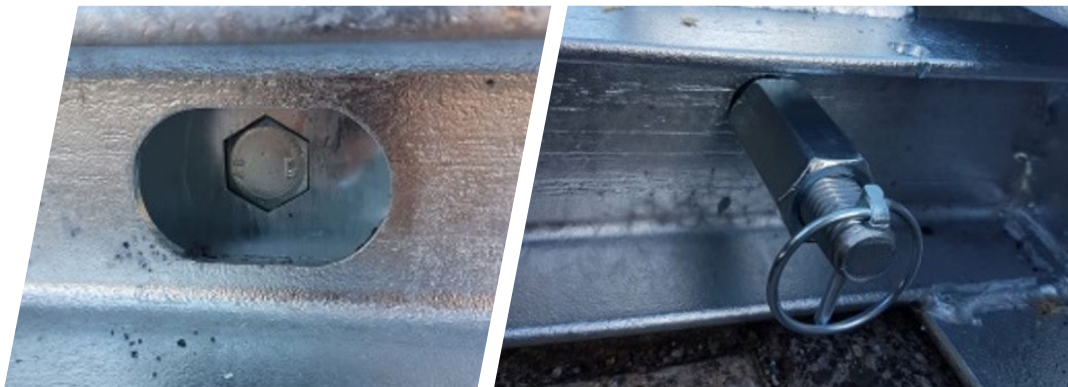
- 1500 or 1520 mm wide and 4700 mm to 10250 mm long
- Wooden or metal floor
- Spray-painted or hot-dip galvanised
- Optionally fitted with one or more bulkheads
- Logo and numbering
- Various bulkhead types possible
- Made-to-measure product, made to customer specifications
- Fully welded using a welding robot, offering constant high quality



## A SELECTION OF OUR OPTIONS

### BLUE WORKX STANDARD INSIDE LOADER PALLET

This inside loader pallet is available from stock and is suitable for 96% of all prefab factories and/or transporters. These pallets have unique bolted joints developed by us that ensure that the head can be disassembled while still being bolted to the pallet floor without leaving any slack.



More and more building contractors demand securing to increase the stability of inside loader pallets at the construction site. Blue Workx has developed a detachable strut that can be attached to new and used inside loader pallets. With a straightforward clamp connection this strut can be installed in 1 minute.





Blue Workx has developed a forklift pick-up yoke for secure and damage-free transport of empty inside loader pallets. With this yoke a 8 tonnes or heavier forklift truck can be used to position an empty pallet in the production hall without causing any damage.



For the woodworking industry, Blue Workx has developed an inside loader pallet for transporting prefab wooden walls. Smart placement of the posts offers maximum width of the loading platform, creating space to transport more units.



Part of our range are pallets with a solid steel floor. With these pallets transporting walls with a height of 4.25 meter is no problem. Adding a clearance of 13 cm, the total transport height is 4.40 meter, and a one-time permit will suffice for transport to almost any construction site.



One of the specials of Blue Workx is a sunken ring pallet. This pallet is used for transporting foundation rings for the windmill industry. This pallet is, of course, also suitable for transporting flanges, boiler bases and other large, round objects.





For the transport of special units, fittings can be mounted to the standard clamping posts of the inside loader pallets. A clamping system is used for quick and rock-solid attachment of the fittings to the pallet floor.

For transportation of special fully finished prefab walls, including glazing, an A-frame inside loader pallet has been developed, which allows the walls to be transported without any damage.



The low-budget version is a starter model that is available at a very affordable price. This model can be extended with a variety of options to meet your needs, e.g. a wooden floor, additional bulkhead positions, post and anchor positions, etc.



Walls higher than 4.25 meter generally have to be transported in a diagonal position. This is also supported by Blue Workx.

Height-adjustable sloping stands can be used to easily transport walls with a height of up to 5 meters. To a certain extent the height of transport sizes may be covered by long-term permits. If this permit is not sufficient, a one-time permit for the width and height is required.



### REMOVABLE STORAGE FRAME

Our base module is 6 meters long, but intermediate modules can be used to extend the storage frame to any required length.

Our base module is also ideal for use as intermediate storage at a construction site. It can be used to store no less than 48 walls with a thickness of 20 cm in a single 6-meter long module.





A walkway has been created along the length of the storage frame. This provides a safe and ergonomic area from where employees can carry out work, such as placing and securing units.



We can also offer simple pin frame storage frames, based on a design that has been in use by the concrete industry for many years.



A new product in our segment is the drop-off pallet, which can be picked up and unloaded at the construction site as a single unit. This pallet is available in different versions.



For the transport of extremely long walls and/or pre-stressed beams, Blue Workx has designed a spindle frame. This product is available in different versions and weights.

The use of a spindle frame allows walls of 14 x 3 m to be transported on a mega-trailer with ease. Compared to an extendible inside loader, the unladen weight is  $\pm 8$  tonnes less. In practice, this means that one additional unit (two instead of one) can be transported in a single load.



You can order inside loader pallets from Blue Workx for any purpose. Our products range from a low-budget version to the most luxurious variant.



Do you need additional temporary storage or transport capacity? Blue Rental is the supplier to turn to for rental, purchase or hire purchase of our standard Blue Rental inside loader pallets. Quantity and rental period can be tailored to your requirements.

**BLUE**  
**RENTAL**



With many years of experience in the transport industry we offer solutions that really make a difference.

Inside loader pallets are increasingly used as an internal means of transport, because they are highly suitable for loading products directly from the mould. This results in huge savings on handling costs. And it also reduces your leadtime. We can also offer advice on complete internal transport solutions.

Contact:

**Niek Fitten, engineer Blue Workx**

Groethofstraat 24, 5916 PB Venlo

Tel. +31 (0)77 366 3443

n.fitten@blue-workx.nl

**BLUE**  
**WORKX**



**BLUE WORKX B.V.**

Groethofstraat 24  
5916 PB Venlo

**T** +31 (0)77 366 3443  
**E** [info@blue-workx.nl](mailto:info@blue-workx.nl)  
**I** [www.blue-workx.nl](http://www.blue-workx.nl)